

INSONO AF3

INSONO AF3-90



WATERPROOFING
SOUNDPROOFING

WATERPROOFING, SOUND DAMPING AND ANTI-FRACTURE MEMBRANES

Compliant with
AS 4858
AS 4654

INSONO AF3 membrane is composed of self-adhesive elastomeric bitumen with an exposed non-woven polyester reinforcement. The back of the membrane is protected by a release film.

The Insono AF3 90 is heat-welded at laps and is specially designed for direct stick tile applications. Additionally, it can be used with cementitious screed, it can also be installed with wood flooring or vinyl planks.

THE **INSONO AF3** MEMBRANE HAS 3 FEATURES

- Waterproofing
- Soundproofing
- Crack isolation through a concrete slab

BENEFITS

- Reinforcement fleece developed to optimize mortar adhesion
- Works on a variety of substrates
- Good traffic resistance during installation



WWW.ENDUROFLEX.COM.AU

SALES@ENDUROFLEX.COM.AU

QUALITY

INSONO AF3

INSONO AF3-90

WATERPROOFING, ANTI-FRACTURE AND SOUNDPROOFING MEMBRANE SYSTEM

PACKAGING

SPECIFICATIONS	INSONO AF3-90
Surface	Non-woven polyester
Underface	Silicone release film
Thickness	2.2 mm
Dimensions	0.91 m x 15 m
Weight	32.4 kg
Rolls per pallet	16

PROPERTIES

PROPERTIES	STANDARD	INSONO AF3-90
Crack-resistant test	ANSI 118.12-2010; par 5.4	Pass
R-value	-	0.045
Moisture Vapour Transmission Rate	ASTM E96	0.14 g/(m ² .24h)
Tensile strength (MD/CMD) Elongation at break initial (MD/CMD) Elongation at break (56D water immersion) (56D water immersion in a bleach solution) (56D water immersion in a detergent solution) (7D heat ageing)	AS 1145 (at 23°C)	60.3 / 30.2 N/50 mm 29 % / 48 % PASS PASS PASS PASS
Cyclic Fatigue (at 23°C)	CSIRO	PASS
Water absorption Weathering side up	AS 4858	0.725 %
Water absorption Weathering side down	AS 4858	0.10 %

TECHNICAL PROPERTIES

MD: Machine direction CMD: Cross machine direction

STANDARD	TEST	INSONO AF3-90	
ANSI 118.12-2010; par. 5.4	Crack-resistant test	Pass	
ANSI A118.12-4.1.2	Moisture resistant	Pass	
R value		0.045	
AS 1145 (at 23°C)	Tensile strength / 50 mm	MD 60.3 N	CMD 30.2 N
	Elongation at break initial	29%	48%
	Elongation at break <ul style="list-style-type: none"> • 56D water immersion • 56D water immersion in a bleach solution • 56D water immersion in a detergent solution • 7D heat ageing 	Pass	
	CSIRO	Cyclic Fatigue (at 23°C)	Pass
AS 4858	Water absorption <ul style="list-style-type: none"> • Weathering side up • Weathering side down 	0.725 %	
		0.10 %	
ASTM E96	Moisture Vapour Transmission Rate	0.14 g/(m ² .24h)	

ROBINSON TEST

ASSEMBLY

- 300mm x 300mm ceramic tiles with sand and polymer grout (3mm in joints)
- Polymer-modified mortar
- INSONO AF3-90 membrane applied to substrate
- Primer : INSONO AF3 ADHESIVE
- 50mm thick concrete slab

RESULT

Cycle 6 or 7:
Residential and Light commercial

ACOUSTIC PROPERTIES

ASSEMBLIES	LABORATORY TESTS		FIELD TESTS	
	STC ⁽¹⁾	IIC ⁽²⁾	ASTC ⁽³⁾	AIIC ⁽⁴⁾
INSONO AF3-90 + ceramic tiles + concrete slab 8 in (20 cm)	53	47	56	56
INSONO AF3-90 + ceramic tiles + concrete slab 8 in (20 cm) + drop ceiling (ACOUSTIVIBE CDC + cellulose + 2 gypsum boards 5/8 in (15.9 mm))	63	60	—	—

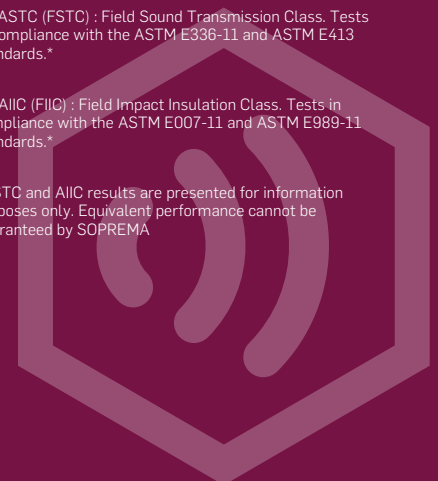
(1) STC : Standard test method for laboratory measurement of airborne sound transmission loss of building partition. Tests in compliance with the ASTM E90-09 standard.

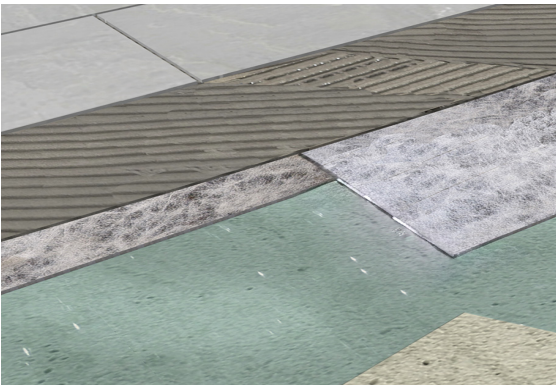
(2) IIC : Standard test method for laboratory measurement of impact sound transmission through floor-ceiling assemblies using the taping machine. Tests in compliance with the ASTM E492-09 standard.

(3) ASTC (FSTC) : Field Sound Transmission Class. Tests in compliance with the ASTM E336-11 and ASTM E413 standards.*

(4) AIIC (FIIC) : Field Impact Insulation Class. Tests in compliance with the ASTM E007-11 and ASTM E989-11 standards.*

*ASTC and AIIC results are presented for information purposes only. Equivalent performance cannot be guaranteed by SOPREMA





INSTALLATION METHOD

The membrane and the substrate where the membrane will be installed must be conditioned at a minimal temperature of 10 °C 24 hours prior to the installation. Prepare surface with INSONO AF3 ADHESIVE, follow drying times indicated on the primer data sheet then install the INSONO AF3 membrane and weld the laps. Apply the polymer-modified mortar and install the ceramic tiles.

CONTROL OF CURING TIME OF THE PRIMER

- Before to proceed with membrane installation over the primer that it dried for at least 20 to 30 min or more depending of the conditions , please check if the primer is dried enough by proceeding with the following instructions :
- Use a piece of the membrane of about 300mm x 300mm and adhere it on the primer.
- Press firmly the membrane on all its surface and pull to peel it off. If the peel resistance is acceptable and some black stains are visible on the primer , then proceed with the installation of the membrane to cover all the surface of the floor. If the peel resistance is poor and no visible black stains , wait another 30 min and stick the membrane again on the primer, press firmly and peel it off again

Repeat that procedure until that you obtain an acceptable result.

LIMITATIONS

- Do not use on wood planks, wood fibreboard, OSB, plywood treated with oil, masonite boards, surfaces such as self-adhesive tiles or laminated fibreglass, metal or other self-adhesive surfaces.
- Do not use pre-mixed products to adhere the tiles to the surface of the INSONO AF3.
- Do not use on cracks larger than 10 mm.

APPROPRIATE SUBSTRATES

CONCRETE AND PLYWOOD

Note: The concrete must have a curing period of at least 28 days before the membrane is applied. Concrete must be fully cured before membrane application, Substrate to have no more than 7% of moisture content.

MATERIAL WARRANTY

SOPREMA products are guaranteed against all manufacturing defects and to be suitable for all stated uses. SOPREMA's liability under this guarantee is limited to replacing or refunding the purchase price of SOPREMA products found to be defective.

If you have any questions about this product or its installation, please contact your ENDUROFLEX, your SOPREMA authorised distributor.

