



CASE STUDY



Project Reference  
Pacific Highway, NSW

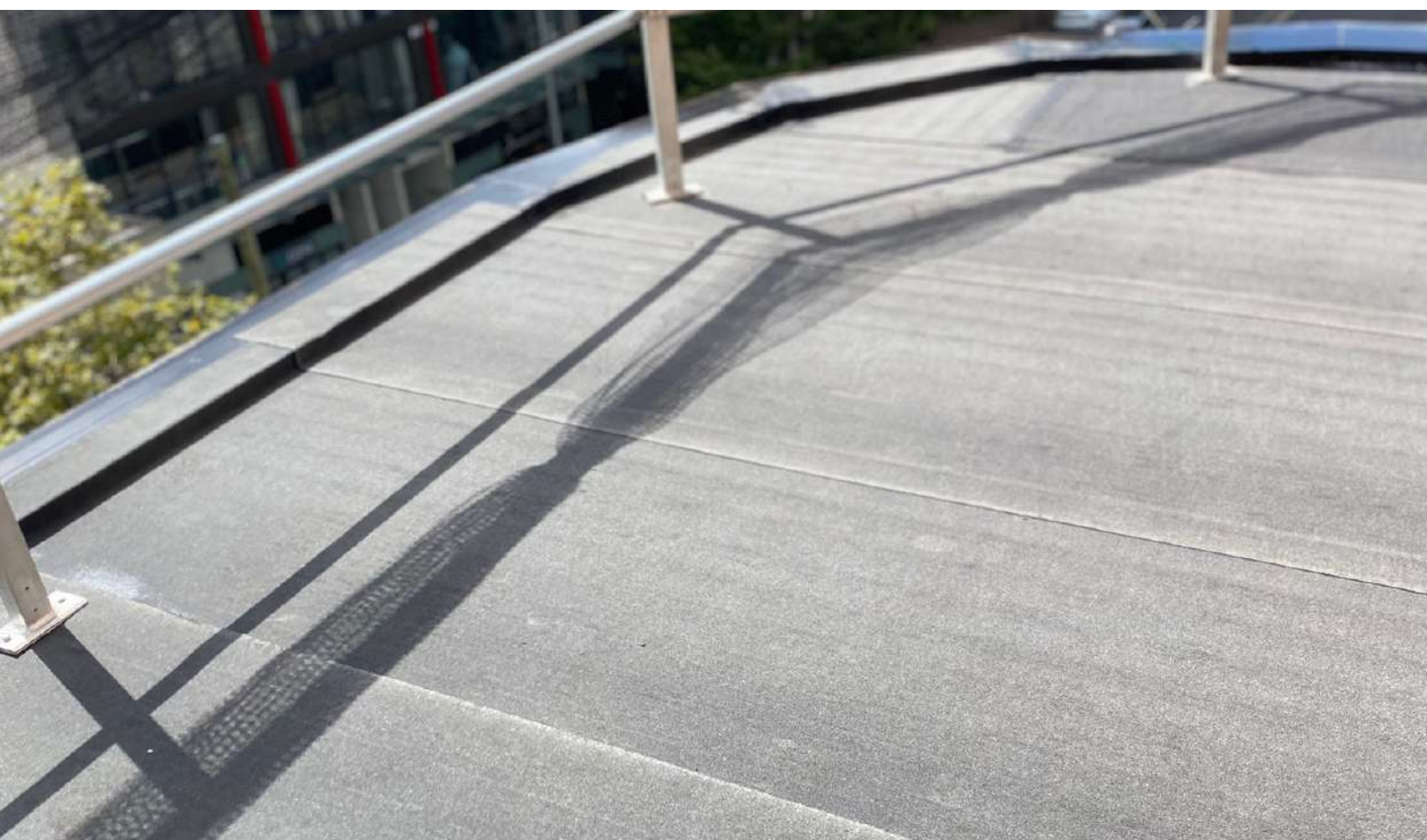


Enduroflex

16/5 Ponderosa Parade, Warriewood NSW 2102  
1300 105 488 | sales@enduroflex.com.au | www.enduroflex.com.au



*Base Sheet Installation*



*Cap Sheet Installation*



*Cap Sheet Installation*



*Cap Sheet Installation*



### Project Reference

<b>Project name:</b>	Pacific Highway, St. Leonard
<b>Location:</b>	NSW – Australia
<b>Type:</b>	Rooftop Renovation
<b>Project size:</b>	
<b>System:</b>	Two-layer DuO waterproofing membrane system
<b>Installation:</b>	Partially bonded basesheet with fully torched DuO cap sheet
<b>Materials:</b>	DeboTack 2.5 T/F C175 Aero, and DuO HT 4/F C180
<b>Completion:</b>	2023